

高清网络摄像机

HD IP Camera

KEDACOM

快速安装指南

Quick Start Guide

一 前言

感谢您购买我司产品，如对本公司产品有疑问或需要，请随时和我们联系。我们尽最大努力来保证本手册信息的正确性，如因升级等原因发生信息修改，恕不另行通知。

获取最新文档请联系产品供应商。

二 安全说明

此内容（手册）的目的是确保用户正确使用本产品，以避免危险或财产损失。在使用产品之前，请认真阅读此手册并妥善保存以备日后参考。如果用户因没有按照以下安全说明，致使设备不能正常使用或损坏等情况，责任由用户承担。

- 请使用满足安全电压要求的电源。
- 如果设备工作不正常，请联系厂家或最近的服务中心。不要以任何方式随意拆卸或修改设备。
- 请防止此产品从高处摔落或受强烈敲击。
- 清洁镜头时，须使用吹气球或专业镜头布除去镜头上的污垢。清洁透明球罩时，须使用足够柔软、干燥的布擦拭，切勿使用含酒精、苯等清洁剂洗涤。
- 避免将摄像机对准强光（如灯光照明、太阳光等处）聚焦，否则容易引起过亮或漏光现象（这并非摄像机故障）也将影响摄像机寿命。
- 避免将产品暴露在非用户手册所示的工作环境下使用。

工作环境	
工作电源	DC12V±10%
温度	-30°C ~ 60°C
湿度	10%~95% (无凝结)
海拔高度	-60m~3000m
大气压	86kPa~106kPa

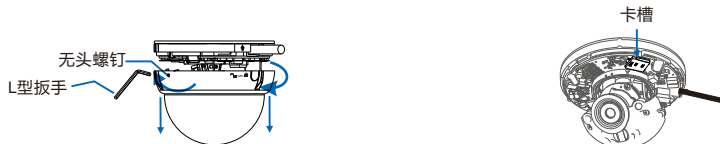
- 使用时不可让水或任何液体流入摄像机。
- 当运送摄像机时，请重新以出厂时的包装进行包装，或用同等品质的材质包装。
- 需要替换部件时，请事先与经销商联系，更换指定型号的部件，或与原部件具有相同特性的部件。擅自使用其它部件进行替换，后果自负。
- 本产品非密封防水设备，不能单独工作于室外露天环境。

【说明】 更多信息见附带光盘中的《高清网络摄像机用户手册》。

三 吸顶安装说明

1. 打开外罩，安装TF卡

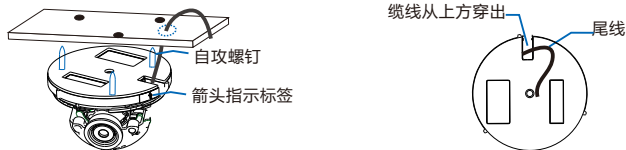
用L型扳手拧松外罩无头螺钉，按图示方向旋转外罩（约1cm）并取下。将准备好的TF卡轻轻推进卡槽。



【说明】此产品内TF卡内存最大支持128G。

2. 线缆排布

顶部出线。在墙壁或天花板上预留出线孔（出线孔径大小可参考附录A），按照底座上的箭头指示将线缆从设备侧部弯曲向上，并穿过出线孔。底部俯视图如下图所示。

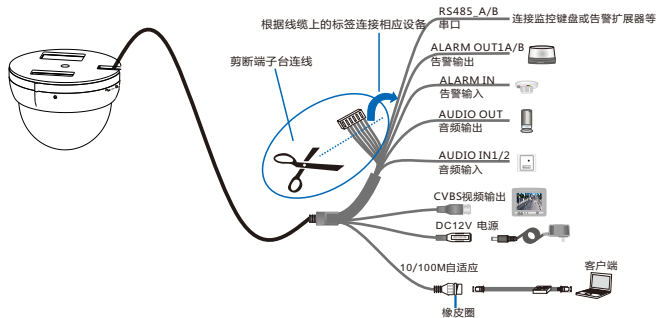


侧方出线。将线缆穿过侧面出线孔，如下图所示。



3. 线缆连接

按照右图所示将摄像机连接到PC或网络交换机，连接电源给设备上电。



【说明】 部分型号支持POE供电，即网口供电，网口连接POE路由后无需连接其他电源。尾线接口请根据具体型号支持为准，上图所示为接口最全的型号。线缆识别请参考附录部分。

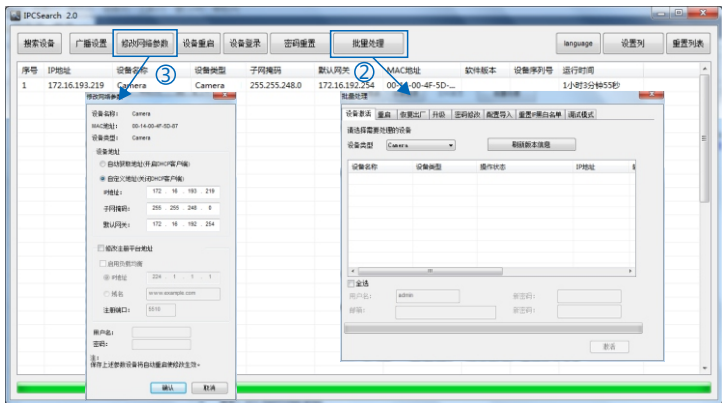
四 登录客户端

最低配置和系统环境：

- 处理器：3.3GHz酷睿®i3系列及以上或相同性能的其他处理器
- RAM内存：4GB及以上
- 操作系统：WindowsXP操作系统或更高版本
- 浏览器：IE7.0及以上版本，Firefox，Google Chrome（41及以下版本）
- DirectX：9.0c

【说明】 本指南将以WindowsXP为例，说明登录Web客户端步骤。

1. 第一次使用时请运行光盘中所带的IPCSearch，在IPCSearch中将显示设备的IP地址、网关等信息。若IPC设备所接入的网络有DHCP服务，DHCP服务器将自动给IPC分配IP地址。
2. 在IPCSearch中选中设备，点击 在弹出的界面中设置admin用户的密码和找回密码时需要的邮箱，点击激活按钮激活设备。待设备重启。



3. 点击 **修改网络参数**，在弹出的界面中配置网络参数。静态分配IP地址时，请选择自定义地址，填写以太网参数。修改参数配置，需要填写管理员用户用户名（admin）及激活设备时所设置的密码。完成IP配置后，设备将自动重启，重启时间约为60秒。
4. 在IPCSearch中双击设备或选中设备点击 **登录设备**，输入用户名和密码 如图所示，登录Web客户端。

用户名

密码

登录

用户名

密码

确认密码

密码有效期

管理员密码录入后通过此配置状态
后请保存配置、校验

确定

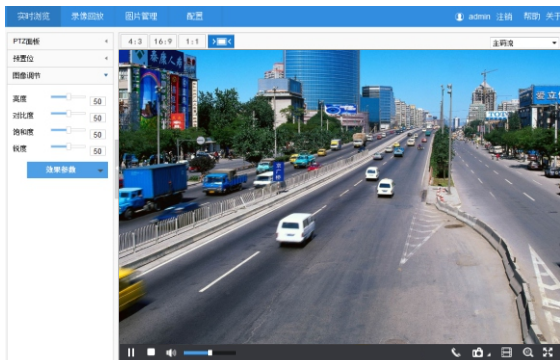
5. 登录成功后，下载并安装视频插件。

【说明】 如果直接通过Web端首次登录未激活的设备，可在登录界面设置管理员的密码激活设备。登录前需要先将PC机设置为与设备在同一网段。

6. 图像调节和镜头调整

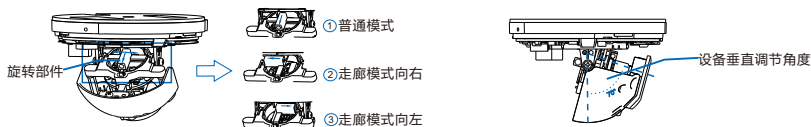
1) 进入客户端后可以直接浏览图像，界面如图。

【说明】 不同型号浏览界面略有差异，请以设备实际界面为准。更多客户端说明参见客户端帮助文
档。



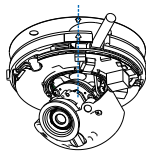
2) 调整设备方向和镜头角度（设备方向：水平205°，垂直70°），直到IPCWeb中的浏览画面达到预定要求。

【说明】 调整镜头角度不宜用力过猛以免损伤设备部件。转动镜头后方的旋转部件，将镜头调节至 $\pm 90^\circ$ 时为走廊模式， 0° 为普通模式。



五 固定设备

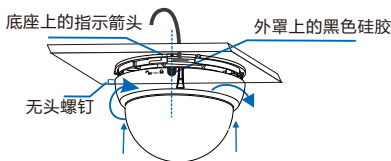
1. 确定好位置后，将安装辅助贴纸贴在天花板上（用户期望监控方向应与安装辅助贴纸的拍摄角度一致），根据标记打孔并塞入膨胀螺钉，将设备底座侧面的标签箭头对准安装贴纸的箭头，用三颗自攻螺钉将设备的底座固定在墙壁或天花板上，打孔尺寸详见附录A。



2. 设备出线

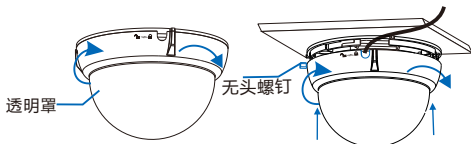
顶部出线

将外罩上的黑色硅胶对准底座上的指示箭头，将外罩装配到底座上，按图示方向旋转外罩，拧紧无头螺钉固定外罩，撕去防尘膜。



侧方出线

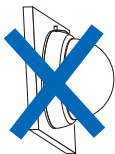
将外罩装配到底座上，线缆从出线孔穿出，然后逆时针旋转外罩，直到无法拧动（约1cm），拧紧无头螺钉，固定外罩，撕去防尘膜。



【说明】 固定外罩时，如果破坏已经调节好的设备镜头方向，可旋转透明罩进行调节。

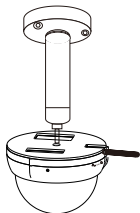
六 支架安装说明

如因环境条件不能采用吸顶安装方式，也可以采用吊顶支架或者壁装支架进行安装。不推荐在无支架的情况下采用壁装安装方式。



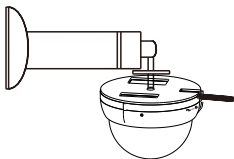
吊顶支架安装

将设备中间的螺旋孔对准支架，向上旋转进入，直到无法拧动，即可完成固定。



壁装支架安装

同样将设备中间的螺旋孔对准支架，向上旋转进入，直到无法拧动，即可完成固定。

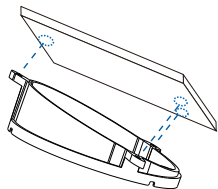


【说明】 标准产品包中不包含吊装支架，壁装支架，支架转接件。如有需要请联系经销商。

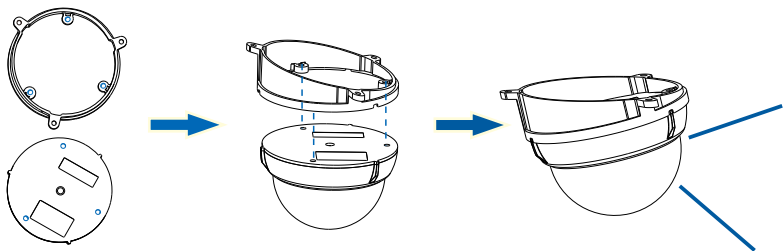
斜面底座支架安装

配合斜面底座支架安装设备，可以有效提高摄像机的视野范围。

1. 将斜面底座贴在墙面或天花板上，对准外围三个安装孔的位置，在前面或者天花板上做记号，方便后续打孔安装。



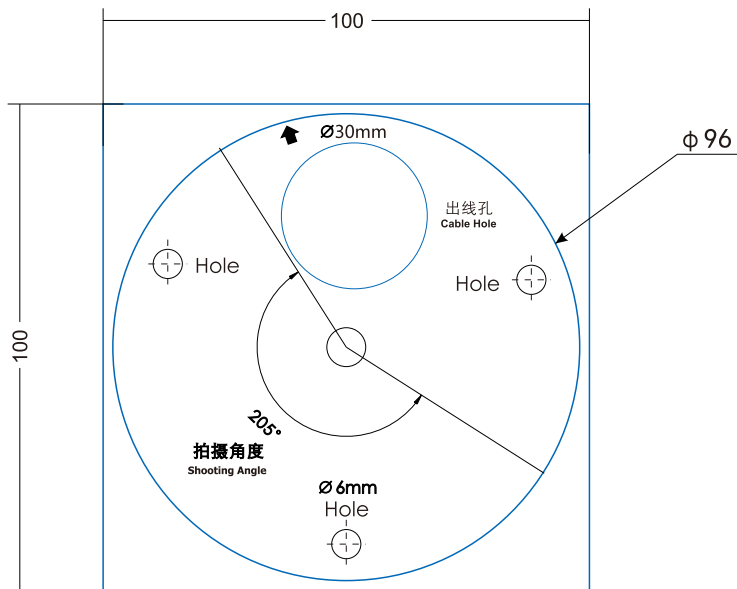
2. 将斜面底座内围三个螺孔对准半球机顶部的三个安装螺孔，并用M3x8的组合螺钉进行固定。



3. 参照前面吸顶安装步骤安装即可完成斜面安装。

【说明】 此安装方式只支持顶部出线。

附录A：打孔尺寸



【说明】 此设备的水平旋转方向为 205° ，所以在进行安装贴纸时，用户期望监控的方向应与拍摄角度方向一致。

附录B：线缆识别

线缆识别				
线序	标签标示	颜色	组别	注释
1	RS485_A	黄	一组	RS485串口A
2	RS485_B	绿		RS485串口B
3	AUDIO_IN 1	粉红	一组	音频输入1
4	AUDIO_IN 2	白		音频输入2
5	AUDIO_OUT	黑/白		音频输出
6	AUDIO_GND	浅绿		音频接地
7	ALARM_IN	灰	一组	告警输入
8	ALARM_IN_GND	红		告警输入接地
9	ALARM_OUT 1A	蓝		告警输出1，两个端子不分正负
10	ALARM_OUT 1B	紫		

保修说明

本保修卡适用于您购买的本公司系列产品。

1.终身保质，免费保修期一年（仅限中国大陆地区，中国大陆以外地区请参考英文说明）。

2.凡保修期内，由于本产品自身引起的故障，请与公司售后服务部联系。

3.保修时我们将使用您的保修卡信息，请认真填写。

4.以下情况，属于有偿保修范围：

- 人为原因造成的设备故障
- 因使用环境不符合本产品要求造成的故障
- 因不可抗力造成的产品损坏
- 无保修卡
- 已过保修期

用户信息

用户名称：

详细地址：

传真：

电话：

邮箱：

邮编：

产品名称：

产品型号：

购买日期：

1. Preface

Thank you for purchasing our product. If there are any questions, or requests, please do not hesitate to contact us.

Every effort has been made to ensure the accuracy and validity of this Guide. Any update of this Guide is subject to change without notice. For the latest document, please contact the dealer.

2. Safety Instruction

These instructions are intended to ensure that the user can use the product correctly to avoid danger or property loss. Please read this Guide carefully before using the product, and keep it properly for future reference. If the product cannot work normally or is damaged because the user does not follow the safety instructions, we shall not assume any responsibility.

- Please adopt power supply in the safety voltage range.
- If the product does not work properly, please contact your dealer or the nearest service center. Never attempt to disassemble or repair the product yourself in any way.
- Do not drop the camera or subject it to physical shock.
- When cleaning the lens, please use a rubber dust blower or lens cleaning cloth to remove the dirt. When cleaning transparent housing, please use soft and dry cleaning cloth to wipe it gently. Never apply any cleanser with ethanol or benzene in it
- Do not focus the camera lens on strong light such as the sun or incandescent lamp. The strong light can cause overexposure or light leak (not camera malfunction), which may shorten camera lifetime.
- Do not expose the camera in the environment not defined in the Guide.

Operating Environment	
Working Voltage	DC12V \pm 10%
Temperature	-30°C~60°C
Humidity	10%~95% (non-condensing)
Altitude	-60m~3000m
Atmospheric Pressure	86kPa~106kPa

- Keep the camera away from water or any liquid.
- While shipping the camera, pack it in the factory packing or use materials with equivalent quality.
- When it is necessary to replace a part, please contact your dealer in advance and replace the part with specified model or part of the same features. We shall not assume any responsibility for problems caused by unauthorized replacement.
- The camera is not water-proof, so it cannot work outdoor alone.

[Notice]: For more information, please refer to the *User Manual for HD IP Camera* in the attached CD.

3. Ceiling Mount

- 1 Take down the housing and install TF card.

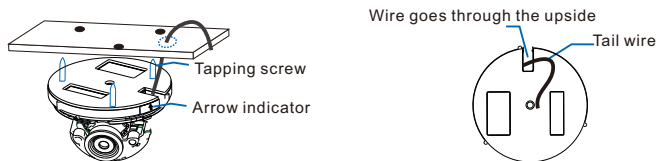
Unscrew the headless screws on the housing with an L-type wrench and rotate the housing (about 1cm) as the picture indicates to take it down. Insert the TF card into the slot.



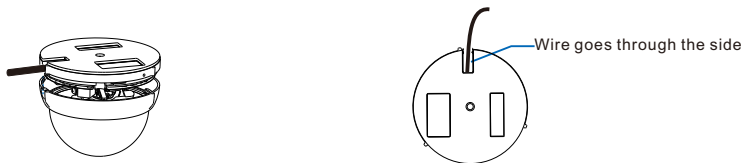
[Notice] The max memory of TF card supported by this camera is 128G.

- 2 Route cables

Top cabling: Punch wiring holes in the wall or ceiling. Refer to the Appendix for hole size. According to the arrow indicator on the base, curve up the wires from camera side and go through the wiring hole. The top view of camera bottom is shown below.

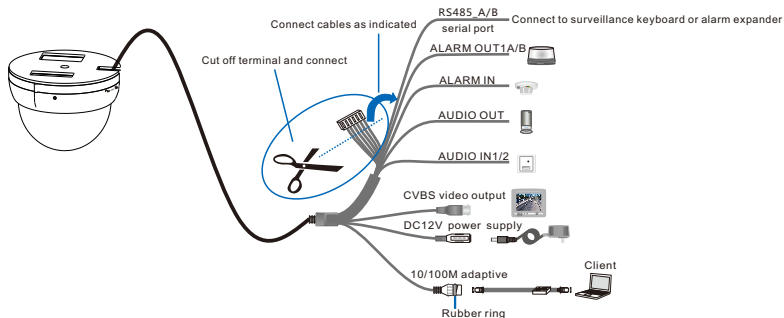


Side cabling: Route the cable through the side hole, as shown below.



- 3 Cable connection

Connect camera to PC or switch as the picture shows, and power it on.



[Notice]:

Some models support PoE (Power on Ethernet). Only have to connect RJ45 connector to PoE switch and no other power supply is needed.

The tail connector is subject to the actual model. The above picture shows the model with most complete connections.

4. Login client

System for client installation:

Processor: 3.3 GHz CORE®i3 series or other equivalent processors

RAM Memory: 4GB or above

Operating System: Windows XP or newer version

Browser: IE7.0 and newer version, Firefox, Google Chrome (41 and lower)

DirectX : 9.0c

[Notice]: This Guide will take Windows XP as example to explain client login steps.

- 1) When use the device for the first time, run the IPCSearch in the attached CD and set camera IP address and gateway. If the network provides DHCP service, DHCP server will assign IP for the camera automatically.
- 2) Select the device and click **"Batch processing"**. In the popup interface, set admin user's password and the claim e-mail address to find back the password. Click "Active" and wait for rebooting.

The screenshot shows the IPCSearch 2.0 interface with several panels open:

- Modify Params:**
 - Device: Camera
 - MAC: 00-14-10-0E-EC-27
 - Type: Camera
 - Device Address:
 - Auto-obtain device address (Open DHCP)
 - Custom device address (Close DHCP)
 - IP Address: 10 . 255 . 252 . 71
 - Netmask: 255 . 255 . 252 . 0
 - Gateway: 0 . 0 . 0 . 0
 - Modify address of register server
 - Enable LDS
 - IP Address: 10 . 75 . 10 . 13
 - Domain: bedroom.com
 - Port: 8080
- Batch processing:**
 - ACTIVE | | | | | | |
 - Device type: Camera
 - Table with columns: Alias, Device Type, Operation, Status, IP
 - Select as:
 - Comment: admin
 - Mail: [input field]
 - Next Password: [input field]
 - Next Password: [input field]

- 3) Click "Modify Params" and set the network parameters. When configure a static IP for the camera, please check "Custom device address (Close DHCP)" and fill the Ethernet parameter. During the modification, the user name (admin) and the password set before activation should be entered. After configuration, the camera will reboot automatically and this takes 60s.
- 4) Double click the device in IPCSearch or click "Login". Enter user name and password to login the web client.

User Name

Password

User Name

Password

Password

Confirm Password

Claim Email

When admin's password gets lost, find it back through this email. Make sure this email address is safe and valid.

5) After login, download and install the plug-in.

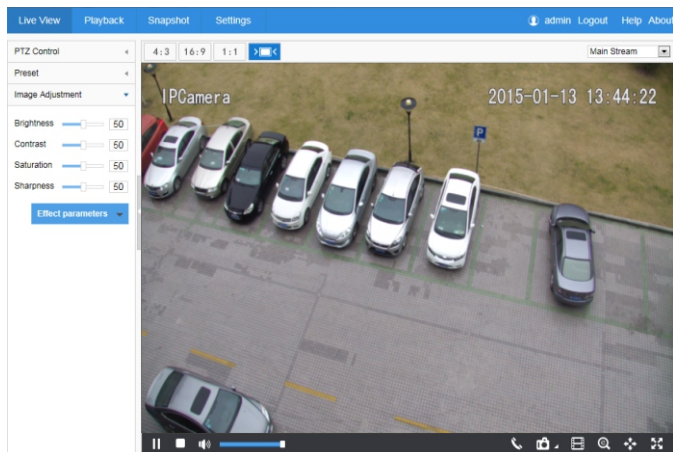
[Notice]: If login the nonactivated camera by web client, you can set admin user's password on the login interface to activate the device. Before setting, set the PC and the device in the same LAN.

6) Live view and lens adjustment

After login, user can view live video directly, as the picture shows.

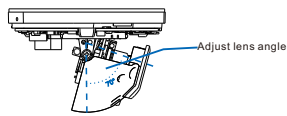
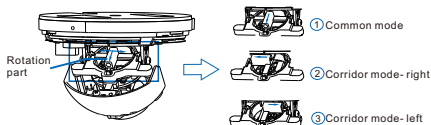
[Notice]: Interface of different models may differ. Please refer to the help file for detailed explanation.

Adjust camera direction, configure camera parameters in web client until the live view meets requirement.



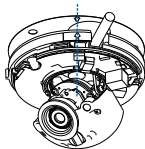
Adjust camera direction and lens angle (Direction: horizontal 205°, vertical 70°) till the live image in IPCWeb reaches requirements.

[Notice] When adjusting lens angle, do not overexert to avoid damaging parts. Rotate the rotation part at the back to $\pm 90^\circ$ for corridor mode and 0° for common mode.



5. Fix Camera

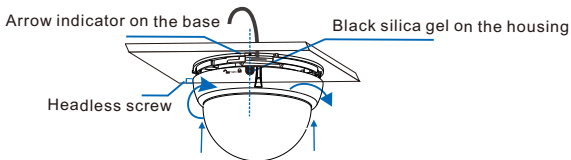
1. After fixing the mounting position, paste the installation sticker on the ceiling (the expected surveillance direction of user should conform to the shooting angle of the sticker). Punch holes according to the marks and insert the expansion screws. Align the arrow on the side tag of camera base to the arrow on the sticker, and fix the camera on the wall or ceiling with 3 tapping screws. Please refer to Appendix A for hole size.



2. Cabling

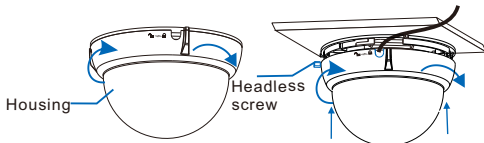
Top cabling

Align the black silica gel on the housing to the arrow indicator on the base and mount the housing onto the base. Rotate housing as the picture shows and tighten the headless screws to fix the housing. Peel off the dust-proof film.



Side cabling

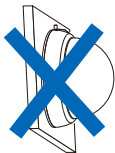
Mount the housing onto the base and route the cables from the wire hole. Rotate the housing anti-clockwise to the end (about 1cm) and tighten the headless screws to fix the housing. Peel off the dust-proof film.



[Notice] When fixing the housing, if the lens direction is changed, rotate the housing to adjust.

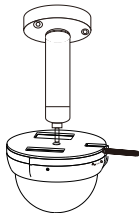
6. Bracket Installation

If the installation condition is limited and ceiling mount is not supported, mount the camera with a ceiling bracket or wall bracket. It is not recommended to apply wall mount without a bracket.



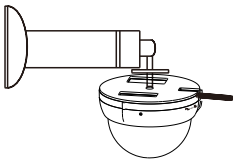
Ceiling bracket mount

Align the spiral hole in the middle of camera to the bracket and rotate upward until the end to finish fixing.



Wall bracket mount

Align the spiral hole in the middle of camera to the bracket and rotate leftward until the end to finish fixing.

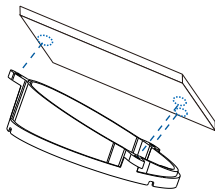


[Notice] Standard product does not include ceiling bracket, wall bracket or bracket adaptor. Please contact the dealer if necessary.

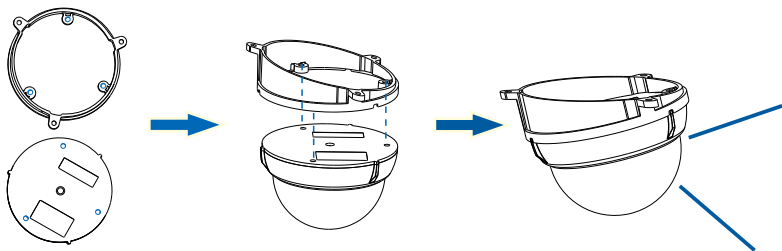
Slant Base Bracket Installation

Installing the camera with slant base bracket will enlarge camera field efficiently.

1. Cling the slant base to the wall or ceiling and make marks on the 3 mounting holes to the wall or ceiling for punching holes.



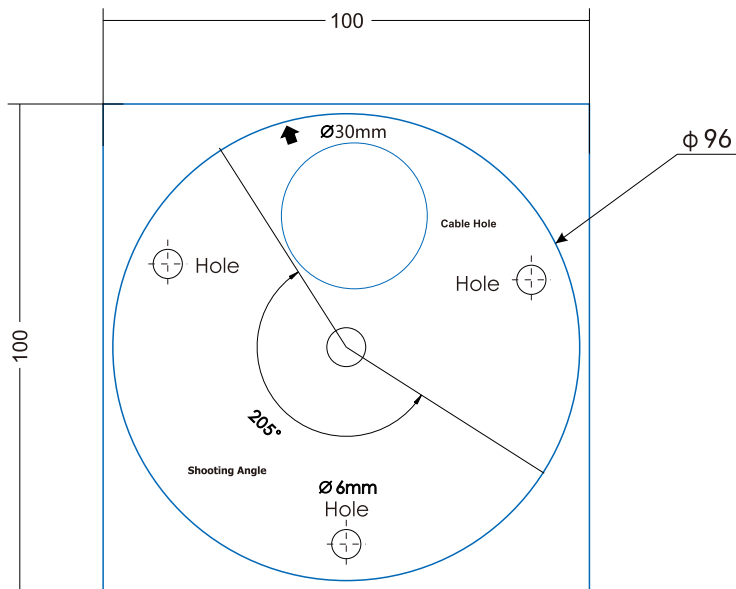
2. Align the 3 inner holes on the base to the 3 screw holes on the top of the dome camera, and use M3x8 screws to connect and fix them.



3. Refer to the steps of Ceiling Mount to finish the installation of slant base bracket.

[Notice] This method supports top wiring only.

Appendix A: Hole Size



[Notice] This camera can rotate 205° horizontally, so when pasting the installation sticker, the expected surveillance direction should conform to the shooting angle.

Appendix B: Cable Identification

Cable Identification				
No.	Tag	Color	Group	Note
1	RS485 A	Yellow	One group	RS-485 serial port A
2	RS485 B	Green		RS-485 serial port B
3	AUDIO IN 1	Pink	One group	Audio input 1
4	AUDIO IN 2	White		Audio output 2
5	AUDIO OUT	Black/White		Audio output
6	AUDIO GND	Light Green		Audio grounding
7	ALARM IN	Grey	One group	Alarm input
8	ALARM IN GND	Red		Alarm input grounding
9	ALARM OUT 1A	Blue		Alarm output 1, regardless of positive and negative
10	ALARM OUT 1B	Purple		

Kedacom Two (2) Year Limited Hardware Warranty

WHAT IS COVERED BY THIS WARRANTY?

Kedacom warrants the Kedacom-branded hardware product and accessories contained in the original packaging (hereinafter referred to as "Kedacom Product") against defects in materials and workmanship when used normally in accordance with Kedacom's published guidelines for a period of TWO (2) YEARS from the date of original retail purchase in areas other than mainland China by the end-user purchaser (hereinafter referred to as "Warranty Period"). For the Kedacom Product purchased in mainland China, see the simplified Chinese version of this warranty for details. Kedacom's published guidelines include but are not limited to information contained in technical specifications, user guides, and service communications. The preceding applies unless otherwise agreed in the contract.

WHAT IS NOT COVERED BY THIS WARRANTY?

This warranty does not apply to any non-Kedacom branded hardware products or any software, even if packaged or sold with Kedacom hardware. Manufacturers, suppliers, or publishers, other than Kedacom, may provide their own warranties to you but Kedacom, in so far as permitted by law, provides their products "AS IS". Software distributed by Kedacom with or without the Kedacom brand (including, but not limited to system software) is not covered by this warranty. Please refer to the licensing agreement accompanying the software for details of your rights with respect to its use. Kedacom does not warrant that the operation of the Kedacom Product will be uninterrupted or error-free. Kedacom is not responsible for damage arising from failures to follow instructions relating to the Kedacom Product's use.

This warranty does not apply: (a) to consumable parts, such as batteries, unless failure has occurred due to a defect in materials or workmanship; (b) to cosmetic damage, including but not limited to scratches, dents, and broken plastic on ports; (c) to damage caused by use with another product; (d) to damage caused by acts outside the control of Kedacom, including without limitation acts of God, accidents, abuse, misuse, fire, storms, earthquakes, flood, or other external cause; (e) to damage caused by exposure of the product to heat, bright light, sun, liquids, sand, or other contaminants; (f) to damage caused by operating the Kedacom Product outside Kedacom's published guidelines; (g) to damage caused by service (including upgrades and expansions) performed by anyone other than a representative of Kedacom, Kedacom employee, or authorized Kedacom agent; (h) to an Kedacom Product that has been modified to alter functionality or capability without the written permission of Kedacom; (i) to defects caused by normal wear and tear or otherwise due to the normal aging of the Kedacom Product, or (j) if any serial number has been removed or defaced from the Kedacom Product.

YOUR RESPONSIBILITIES

If your Kedacom product is capable of storing data and other information, you should make periodic backup copies of the information contained on the storage media to protect the contents and as a precaution against possible operational failures.

Before receiving warranty service, Kedacom or its authorized agents may require that you furnish proof of purchase details, respond to questions designed to assist with diagnosing potential issues, and follow Kedacom's procedures for obtaining warranty service. Before submitting your Kedacom Product for warranty service, you should maintain a separate backup copy of the contents of its storage media, remove all personal information that you want to protect, and disable all security passwords.

During warranty service, it is possible that the contents of the Kedacom product's storage media will be lost, replaced or reformatted. In such an event, Kedacom and its authorized agents are not responsible for any loss of data or other information contained on the storage media or any other part of the Kedacom product serviced.

Following warranty service, your Kedacom Product or a replacement product will be returned to you as your Kedacom Product was configured when originally purchased, subject to applicable updates. You will be responsible for reinstalling all other data and information. Recovery and reinstallation of other data and information are not covered under this warranty.

WHAT WILL KEDACOM DO IF THE WARRANTY IS BREACHED?

If during the Warranty Period, you submit a valid claim to Kedacom or an authorized Kedacom agent, Kedacom will, at its option, (i) repair the Kedacom Product using new or previously used parts that are equivalent to new in performance and reliability, or (ii) exchange the Kedacom Product for a refund of your purchase price.

A Kedacom replacement part or product, including a user-installable Kedacom part that has been installed in accordance with instructions provided by Kedacom, assumes the remaining warranty of the Kedacom Product or ninety (90) days from the date of replacement or repair, whichever provides longer coverage for you. When a product or part is replaced or a refund provided, any replacement item becomes your property and the replaced or refunded item becomes Kedacom's property.

Kedacom reserves the right to refund the purchase price as its exclusive warranty remedy.

HOW TO OBTAIN WARRANTY SERVICE?

To seek warranty service, please contact a local authorized Kedacom agent. When contacting the agent via telephone, other charges may apply depending on your location.

User Information

Complete the form below and keep for ready reference.

User Name:	
Address:	Postal Code:
Tel:	Mobile:
Fax:	E-Mail:
Product Name:	Product Model:
Date of Purchase:	

客户咨询热线：400-828-2866

KEDACOM

苏州科达科技股份有限公司

Suzhou Keda Technology Co.,Ltd.

中国: 江苏省苏州市高新区金山路131号(215011)

Tel: +86-512-6841 8188 Fax: 86-512-68412699

Suzhou Keda Technology Co.,Ltd.

Singapore: 627A Aljunied Road, #09-07, BizTech Centre, Singapore 389842

Tel: +65-6842-5700 Fax: +65-6842-5900

05.03.800380 (V1.1) 20200522